

Year	% Herd
1998	6.17867
1999	7.5391
2000	8.06549
2001	8.53595
2002	13.2
2003	12.3
2004	12.06
2005	9.76
2006	8.17
2007	6.86
2008	6.86

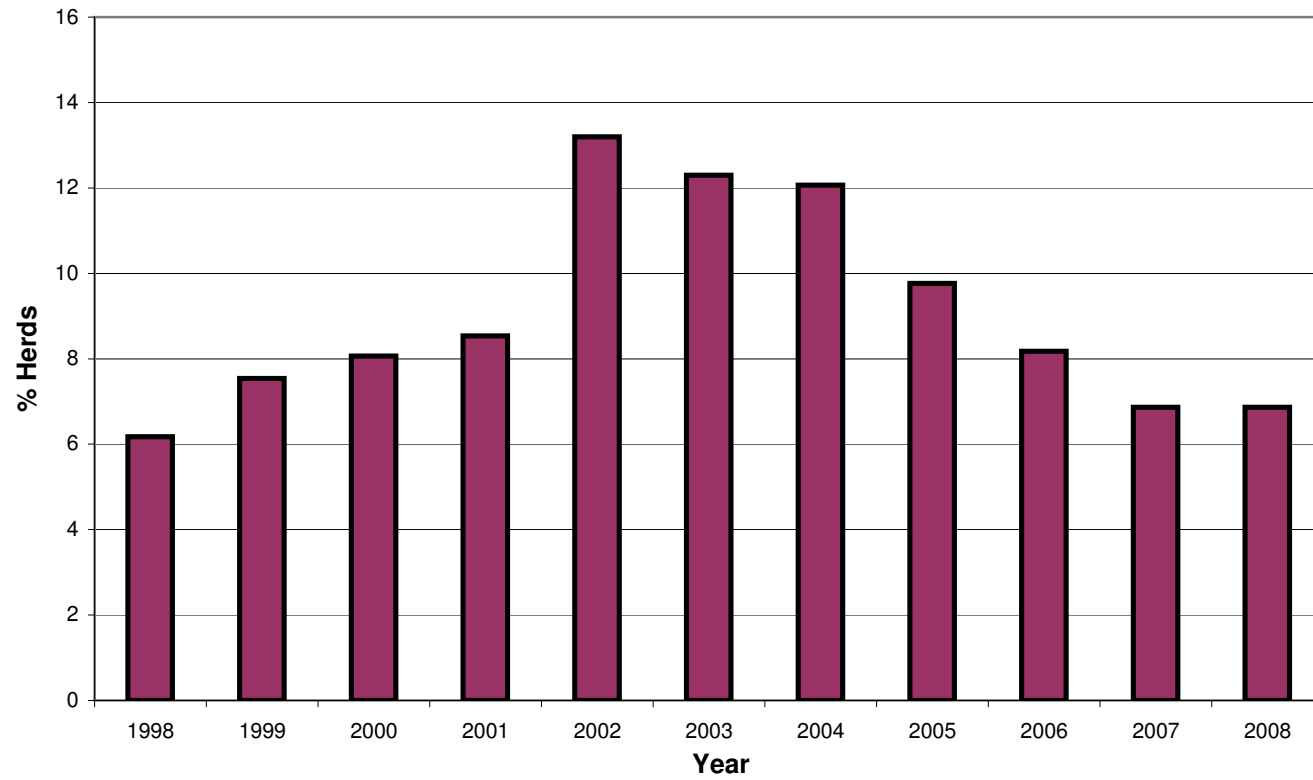
**Note**

Please see the attached spreadsheet which gives the number of herds that had TB disclosed in the calendar years in question and the number of herds (with stock) that had a test during each of the years. In Northern Ireland herds all herds are on an annual programme of testing (tested at least once every 12 months) therefore the number tested should be a reflection of the number of herds existing. We record our disease statistics based on the number of herds tested because it provides a true representation level of disease and allows year on year comparisons to be made.

Year	%Herds	Herds with TB reactors	Herds with any test (> 0 cattle)
1998	6.18	1689	27337
1999	7.54	2010	26663
2000	8.06	2143	26575
2001	8.48	1808	21333
2002	11.68	2820	24134
2003	12.21	3051	24992
2004	12.06	3070	25449
2005	9.76	2435	24938
2006	8.17	1998	24447
2007	6.86	1633	23795
2008 Est^	6.86	1606	23408

^ Estimate based on figures for the 12 month period 01/11/2007 to 31/10/2008

### Herd TB Test Prevalence



Prevalence = test positives as % of herd with any TB test