



Department
for Environment
Food & Rural Affairs



Monthly publication of National Statistics on the Incidence of Tuberculosis (TB) in Cattle to end March 2013 for Great Britain

These statistics were released today, Wednesday 12 June 2013 at 09:30, with the next notice to be updated on Wednesday 17 July 2013 at 09:30.

These statistics are obtained from the Animal Health and Veterinary Laboratories Agency (AHVLA) work management IT support system (Sam), used for the administration of TB testing in GB. They are a snapshot of the position on the date on which the data were extracted. These statistics may be subject to regular revision until all test results are available. In particular figures from 2009 onwards will be subject to further revision as test and breakdown records are completed.

The key points relating to March 2013 are :-

- The provisional March 2013 incidence rate is 3.6%, compared to 3.9% in March 2012. However, care needs to be taken not to read too much into short term figures, especially as this figure includes a number of unclassified incidents. As such, the incidence rates are subject to further revisions as more tests and their results for the period are input.
- The number of new herd incidents during the period January to March 2013 was 1,407 compared to 1,534 for January to March 2012. The number of tests on officially TB free herds was 22,878 during January to March 2013, compared to 24,981 during January to March 2012.
- The number of cattle compulsorily slaughtered as reactors or direct contacts was 9,278 during January to March 2013, compared to 9,474 during January to March 2012.

Enquiries to :- tbstatistics@defra.gsi.gov.uk
Media Enquiries to :- 0207 238 6007 (Press Office)

A National Statistics publication. National Statistics are produced to high professional standards. They undergo regular quality assurance reviews to ensure that they meet customer needs. They are produced free from any political interference. For general enquiries about National Statistics, contact the National Statistics Public Enquiry Service: tel. 0845 601 3034 email info@statistics.gov.uk. You can find National Statistics on the internet at www.statistics.gov.uk.

Figure 1: Number of officially TB free status being withdrawn breakdowns, as a percentage of tests on officially TB free herds :-

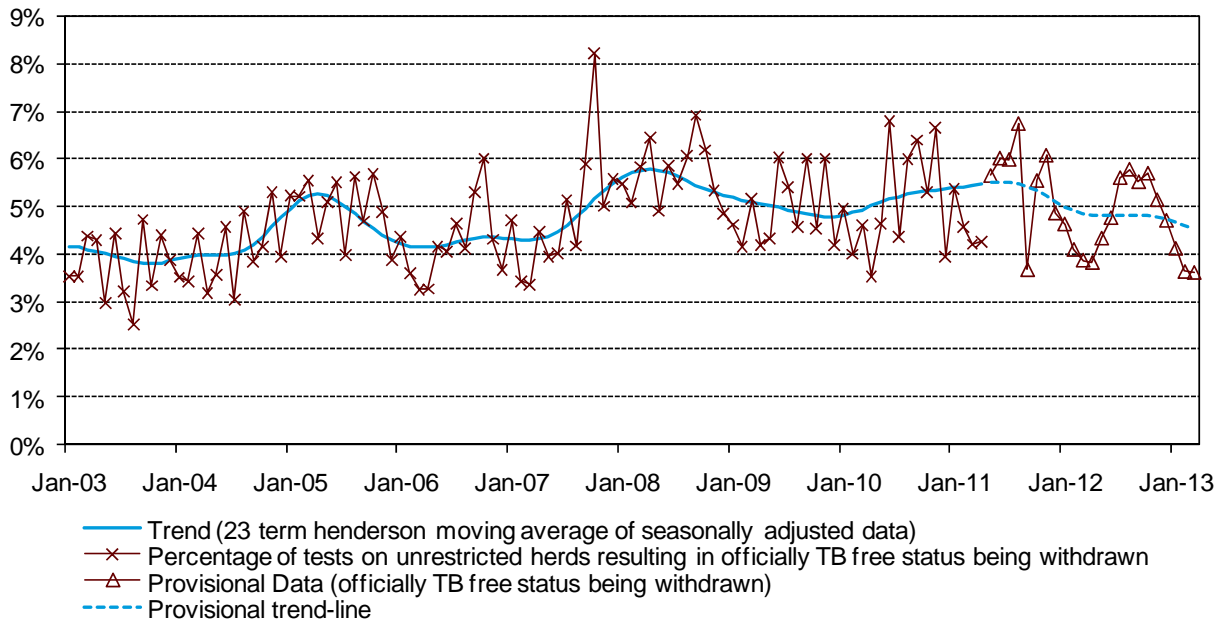
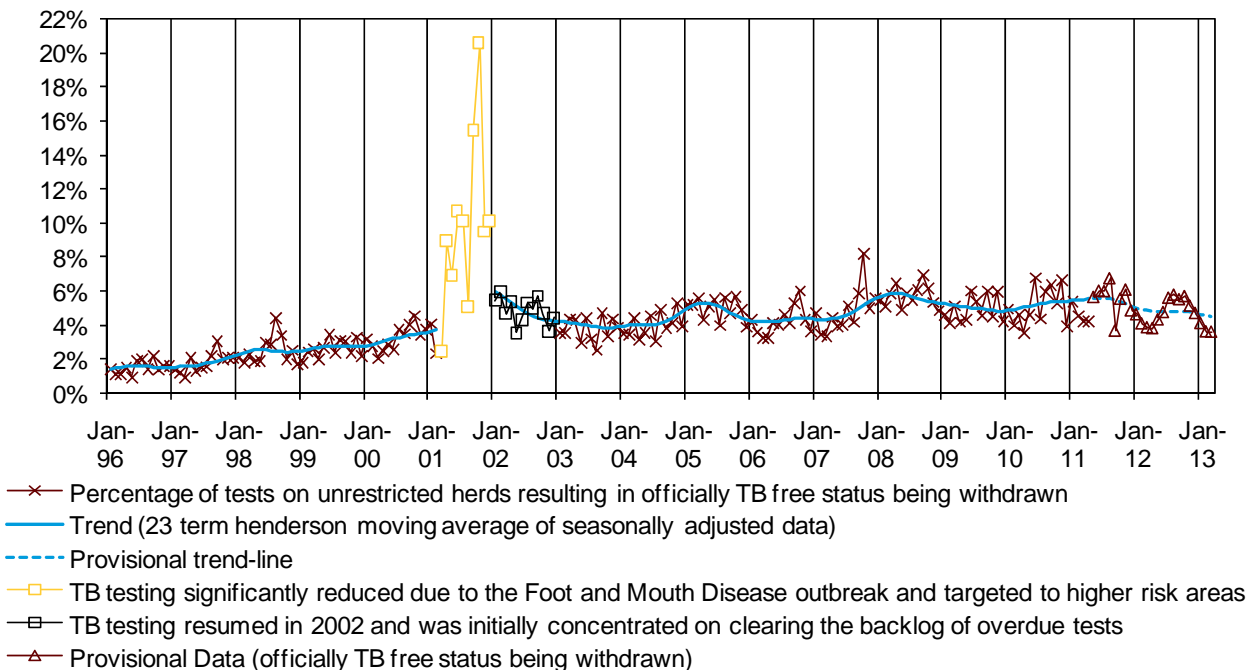


Figure 2: Number of officially TB free status being withdrawn breakdowns, as a percentage of tests on officially TB free herds :-



The charts published in this statistical notice, together with the equivalent figures from January 1996 onwards, are also available in spreadsheet format on the Defra web site at :- <https://www.gov.uk/government/publications/incidence-of-tuberculosis-tb-in-cattle-in-great-britain>. Visit the second link (MS Excel spreadsheet) entitled "Incidence of TB in cattle in Great Britain - GB dataset".

Notes

Herd terminology

1. The terminology used to describe TB breakdowns in this notice to classify herds according to their TB status has been brought in line with that used in EU regulations. This means that in Table 1 of this notice the following changes have been made :-

Old terminology

Herds under movement restriction

New terminology

Herds not officially TB free (non-OTF herds)

(these are recorded in Table 1, column 2)

Unrestricted herds

Officially TB free (OTF) herds

(these are recorded in Table 1, column 3)

New confirmed herd incidents

New herd incidents with OTF status withdrawn (OTFW)

(these are recorded in Table 1, column 5)

2. There is no change to the composition of the underlying data. Further information on this and TB incident classification can be found at :-
http://ahvla.defra.gov.uk/documents/ov/ov-newsletter/OV_newsletter_12.pdf
3. Data for more recent months should be treated as provisional results, as a number of TB incidents are still 'unclassified'. These are TB incidents that at the end of the period covered by this notice had not been designated OTFW, but were still ongoing and could become OTFW if further testing revealed one or more animals with post mortem evidence of TB.

Methodology

1. Certain statistics are affected by seasonal patterns and variations in the frequency of testing. TB testing is seasonal as more herds are tested in the winter when more cattle are housed. The animals tested are not a random sample of the whole GB herd. Furthermore, herds are tested more frequently in areas of higher TB incidence than in those of historically low incidence. In general, as more tests are carried out, more TB incidents (infected herds) are likely to be found.
2. The herd TB incidence figure is calculated by first estimating a point average for OTFW incidents where there are a number of unclassified results (the average of the ranges provided in the accompanying tables, for each month), this average is then divided by the number of tests in OTF herds each month, and an average is then calculated.
3. The trend in the incidence of TB in cattle in Great Britain is analysed using a 23-term Henderson moving average of the seasonally adjusted data of the incidence rate (the number of OTFW breakdowns divided by the number of tests on OTF herds).
4. From March to December 2001, the trend was not published because the reliability of the underlying data was significantly affected as a result of the disruption to TB testing during the Foot and Mouth Disease outbreak. Publication of the underlying trend resumed from January 2002 onwards, although 2002 data and trend should be treated with caution as post-FMD testing was initially targeted at higher risk herds and herds with overdue tests.

Further Information

1. This statistical notice and a wide range of other statistics are available on the internet at - <https://www.gov.uk/government/organisations/department-for-environment-food-rural-affairs/about/statistics>
2. For further information on TB in cattle, TB testing and much more, please go to the Defra TB Website – <https://www.gov.uk/government/policies/reducing-bovine-tuberculosis>
3. For statistics on TB in Northern Ireland please visit - <http://www.dardni.gov.uk/index/dard-statistics/animal-disease-statistics.htm>
4. For statistics on TB in the Republic of Ireland please visit - <http://www.agriculture.gov.ie/animalhealthwelfare/diseasecontrol/bovinetbbrucellosiseradicationschemes/statistics/tbstats>

TABLE 1: TB INCIDENTS IN GREAT BRITAIN - HERDS

		Total tests on herds	Herds not officially TB free (non-OTF herds)	Tests on officially TB free herds (OTF)	Of which: New herd incidents	Of which: officially TB free withdrawn (OTFW)	Number of OTFW breakdowns as a percentage of tests on officially TB free herds
		(1)	(2)	(3)	(4)	(5)	(6)
1996		36,314	1,589	34,812	1,075	490	1.4%
1997		34,065	1,632	32,295	1,195	540	1.7%
1998		37,046	2,077	34,502	1,514	787	2.3%
1999		41,365	2,374	38,338	1,661	967	2.5%
2000		40,669	2,482	37,184	1,738	1,135	3.1%
2001	*	13,187	1,697	11,118	802	571	5.2%
2002	**	49,709	4,167	43,641	3,323	2,042	4.7%
2003		56,208	5,460	47,568	3,214	1,789	3.8%
2004		56,836	5,220	49,027	3,341	1,934	4.0%
2005		55,887	5,669	46,725	3,665	2,308	4.9%
2006		64,457	5,859	56,051	3,530	2,303	4.1%
2007		64,145	6,582	54,856	4,188	2,546	4.7%
2008		66,432	7,935	54,854	5,011	3,093	5.6%
2009	(prov)	72,205	8,386	58,894	4,599	2,847	4.9%
2010	(prov)	74,474	7,964	61,587	4,723	3,013	4.9%
2011	(prov)	76,653	8,247	62,485	4,906	3,086	5.1%
2012	(prov)	88,571	9,037	73,659	5,170	3,433	4.7%
2013	(prov)	26,994	6,659	22,878	1,407	853	3.8%
2010	Jan	(prov) 6,852	3,675	5,758	434	284	5.0%
	Feb	(prov) 8,114	3,766	6,916	440	277	4.0%
	Mar	(prov) 8,121	3,905	7,144	527	328	4.6%
	Apr	(prov) 8,834	3,933	7,365	428	259	3.5%
	May	(prov) 5,833	3,879	4,764	388	218	4.6%
	Jun	(prov) 4,059	3,875	3,104	391	209	6.8%
	Jul	(prov) 5,086	3,683	3,733	247	161	4.4%
	Aug	(prov) 3,956	3,517	3,032	288	181	6.0%
	Sep	(prov) 4,939	3,451	3,937	359	249	6.4%
	Oct	(prov) 6,243	3,475	5,231	404	277	5.3%
	Nov	(prov) 6,664	3,640	5,687	525	377	6.7%
	Dec	(prov) 5,773	3,615	4,916	292	193	3.9%
2011	Jan	(prov) 7,826	3,879	6,527	538	350	5.4%
	Feb	(prov) 7,909	4,022	6,652	464	302	4.6%
	Mar	(prov) 8,615	4,161	7,486	510	312	4.2%
	Apr	(prov) 7,035	4,140	5,694	397	241	4.3%
	May	(prov) 6,142	4,196	4,898	467	270 - 285	5.5% - 5.8%
	Jun	(prov) 4,674	4,117	3,414	347	201 - 211	5.9% - 6.2%
	Jul	(prov) 4,656	4,004	3,388	299	183 - 224	5.4% - 6.6%
	Aug	(prov) 4,231	3,859	3,209	292	187 - 247	5.8% - 7.7%
	Sep	(prov) 5,900	3,681	4,660	250	163 - 180	3.5% - 3.9%
	Oct	(prov) 6,010	3,779	5,026	421	271 - 288	5.4% - 5.7%
	Nov	(prov) 6,564	4,006	5,571	489	327 - 352	5.9% - 6.3%
	Dec	(prov) 7,091	4,128	5,960	432	279 - 302	4.7% - 5.1%
2012	Jan	(prov) 8,197	4,350	6,998	483	321 - 329	4.6% - 4.7%
	Feb	(prov) 9,064	4,484	7,703	462	311 - 322	4.0% - 4.2%
	Mar	(prov) 11,715	4,743	10,280	589	394 - 404	3.8% - 3.9%
	Apr	(prov) 7,893	4,864	6,538	406	248 - 253	3.8% - 3.9%
	May	(prov) 7,306	4,961	5,994	447	257 - 264	4.3% - 4.4%
	Jun	(prov) 5,425	4,921	4,176	325	198 - 201	4.7% - 4.8%
	Jul	(prov) 5,061	4,903	3,860	315	216 - 218	5.6% - 5.6%
	Aug	(prov) 5,420	4,950	4,242	354	243 - 249	5.7% - 5.9%
	Sep	(prov) 5,881	4,998	4,742	369	259 - 266	5.5% - 5.6%
	Oct	(prov) 6,816	5,183	5,748	452	326 - 331	5.7% - 5.8%
	Nov	(prov) 9,061	5,419	7,681	571	392 - 400	5.1% - 5.2%
	Dec	(prov) 6,732	5,509	5,697	397	268 - 270	4.7% - 4.7%
2013	Jan	(prov) 8,746	5,756	7,336	504	297 - 309	4.0% - 4.2%
	Feb	(prov) 9,007	5,867	7,564	410	272 - 279	3.6% - 3.7%
	Mar	(prov) 9,241	5,984	7,978	493	284 - 294	3.6% - 3.7%

Notes:- The data are a snapshot extracted from Sam. Data for 2009 onwards will remain provisional and subject to revision until all culture results are available and final data validation has been carried out. The herd incidence rates for the latest months are given as a range because a number of incidents are still unclassified, so data for these months should be treated as provisional results.

- (1) Herds for which tuberculin skin testing is carried out on at least one animal during the period shown.
 - (2) Herds that had lost their OTF status at some time during the period shown due to a TB incident.
 - (3) Any test carried out in an OTF herd during the period shown.
 - (4) Herds which were previously OTF but either had cattle that reacted to a tuberculin test or had a tuberculous animal disclosed by routine meat inspection at slaughter, during the period shown.
 - (5) New herd incidents (column 4) where OTF status was withdrawn from the herd.
 - (6) Column 5 as a percentage of column 3.
- * Data for 2001 are not comparable with other years. During the outbreak of Foot and Mouth Disease, TB testing was significantly reduced and necessarily targeted to areas of higher risk.
- ** Data for 2002 are not comparable with other years. Testing resources were concentrated on herds overdue their tests (because of the backlog caused by the Foot and Mouth Disease outbreak).

TABLE 2: TB INCIDENTS IN GREAT BRITAIN - ANIMALS

		Total tests on herds	Total cattle tests	Cattle compulsorily slaughtered as reactors or contacts:		
				Total	Reactors	Direct contacts
		(1)	(2)	(3)	(4)	(5)
1996		36,314	2,249,891	3,776	3,151	625
1997		34,065	2,170,630	3,384	3,017	367
1998		37,046	2,447,848	5,685	4,782	903
1999		41,365	2,825,177	6,754	5,794	960
2000		40,669	2,931,658	8,123	6,877	1,246
2001	*	13,187	1,181,861	6,156	5,200	956
2002	**	49,709	3,961,145	22,072	19,191	2,881
2003		56,208	4,474,526	23,972	20,798	3,174
2004		56,836	4,604,721	22,214	19,636	2,578
2005		55,887	4,811,699	29,231	25,627	3,604
2006		64,457	5,417,573	22,062	20,090	1,972
2007		64,145	5,753,244	26,882	25,330	1,552
2008		66,432	6,178,789	39,007	36,968	2,039
2009	(prov)	72,205	6,840,568	37,979	36,739	1,240
2010	(prov)	74,474	7,447,653	31,949	31,277	672
2011	(prov)	76,653	7,585,389	34,244	33,459	785
2012	(prov)	88,571	8,023,411	37,754	37,068	686
2013	(prov)	26,994	2,433,475	9,278	8,999	279
2010	Jan	(prov) 6,852	707,262	2,147	2,122	25
	Feb	(prov) 8,114	814,286	3,127	3,098	29
	Mar	(prov) 8,121	791,236	2,989	2,937	52
	Apr	(prov) 8,834	898,948	2,414	2,343	71
	May	(prov) 5,833	508,521	2,916	2,826	90
	Jun	(prov) 4,059	373,260	2,536	2,482	54
	Jul	(prov) 5,086	527,645	2,758	2,675	83
	Aug	(prov) 3,956	390,866	2,207	2,167	40
	Sep	(prov) 4,939	488,153	2,261	2,194	67
	Oct	(prov) 6,243	629,867	2,764	2,701	63
	Nov	(prov) 6,664	715,734	2,958	2,903	55
	Dec	(prov) 5,773	601,875	2,872	2,829	43
2011	Jan	(prov) 7,826	788,991	2,657	2,592	65
	Feb	(prov) 7,909	783,650	3,582	3,535	47
	Mar	(prov) 8,615	847,824	3,154	3,116	38
	Apr	(prov) 7,035	752,330	2,604	2,562	42
	May	(prov) 6,142	559,750	2,881	2,836	45
	Jun	(prov) 4,674	458,086	3,180	2,939	241
	Jul	(prov) 4,656	489,866	2,454	2,417	37
	Aug	(prov) 4,231	402,351	2,619	2,573	46
	Sep	(prov) 5,900	581,203	2,520	2,467	53
	Oct	(prov) 6,010	558,376	2,131	2,052	79
	Nov	(prov) 6,564	679,669	3,167	3,111	56
	Dec	(prov) 7,091	683,293	3,295	3,259	36
2012	Jan	(prov) 8,197	720,177	2,580	2,537	43
	Feb	(prov) 9,064	782,423	3,769	3,714	55
	Mar	(prov) 11,715	989,966	3,125	3,091	34
	Apr	(prov) 7,893	722,120	2,807	2,776	31
	May	(prov) 7,306	579,842	3,464	3,411	53
	Jun	(prov) 5,425	489,392	2,525	2,459	66
	Jul	(prov) 5,061	477,181	3,311	3,244	67
	Aug	(prov) 5,420	486,819	2,988	2,863	125
	Sep	(prov) 5,881	547,142	2,638	2,620	18
	Oct	(prov) 6,816	655,452	3,955	3,893	62
	Nov	(prov) 9,061	931,373	3,754	3,682	72
	Dec	(prov) 6,732	641,524	2,838	2,778	60
2013	Jan	(prov) 8,746	769,828	3,202	3,143	59
	Feb	(prov) 9,007	813,522	3,104	2,997	107
	Mar	(prov) 9,241	850,125	2,972	2,859	113

Notes: The data are a snapshot extracted from Sam. Data for 2009 onwards will remain provisional and subject to revision each month until all culture results are available and final data validation has been carried out.

- (1) Herds in which tuberculin skin testing was carried out in at least one animal during the period shown. (same as column 1 in Table 1).
- (2) Number of animals tested.
- (3) Animals compulsorily slaughtered because they reacted to the tuberculin skin test or because they were considered to be direct contacts (see below). Not all of these animals showed evidence of *Mycobacterium bovis* infection at post-mortem examination.
- (4) An animal which was compulsorily slaughtered because it responded to the tuberculin skin test in a way that was consistent with it being infected with *Mycobacterium bovis*.
- (5) An animal in an OTFW incident that, although not a test reactor, was considered to have been exposed to *Mycobacterium bovis* and compulsorily slaughtered.
- * Data for 2001 are not comparable with other years. During the outbreak of Foot and Mouth Disease, TB testing was significantly reduced and necessarily targeted to areas of higher risk.
- ** Data for 2002 are not comparable with other years. Testing resources were concentrated on herds overdue their tests (because of the backlog caused by the Foot and Mouth Disease outbreak).